



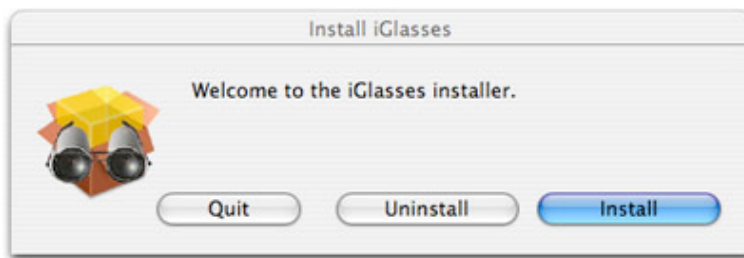
## iGlasses Manual

### Installing iGlasses:

If you're just trying out iGlasses, download the free demo installer.

If you've purchased iGlasses, download the full version installer. (You will be given access to the full version installer upon purchasing.)

After downloading, you'll find the iGlasses Installer in your downloads folder or on your Desktop. Double-click the installer, and then follow the on-screen instructions. Like many installers, you'll be asked for an administrator password. (This is the password you chose when first setting up your Mac.)

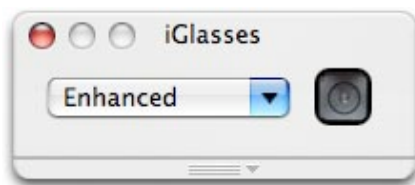


### Uninstalling iGlasses:

Simply run the installer as described above and use the Uninstall button.

### Using iGlasses:

After installing, the iGlasses Window will appear in compatible programs. If you close the window, it can be opened again by selecting "iGlasses Settings" from the menu bar. (It's in the Video menu in iChat and the File menu in most other applications.)

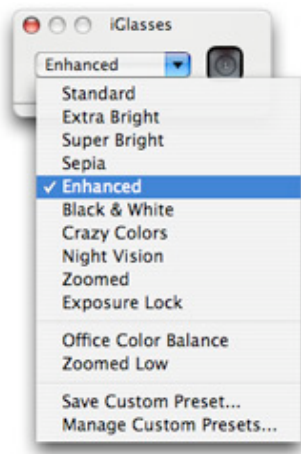


The iGlasses Window's position and opened/closed status is remembered for each application you use.

When the application starts showing video from your camera, the iGlasses Window will activate.

## Using Preset Settings:

The following preset settings are available in the menu:



**Standard:** Select this option to return the video image to normal factory settings.

**Extra Bright:** Provides extra brightness for conferencing in darker than normal conditions.

**Super Bright:** Provides lots of extra brightness for use in dark rooms.

**Enhanced:** Gives a sharper image with deeper colors.

**Black & White:** For that artsy look.

**Sepia:** For an old time look.

**Crazy Colors:** Just for fun, cycles through the rainbow of colors.

**Night Vision:** For video conferencing in total darkness!

**Macro Focus:** For getting up close and personal with your iSight (available only with the external iSight).

**Zoomed:** Quickly zooms in to get a closer view.

**Exposure Lock:** Disables the Built-in iSight's automatic exposure and white balance.

Don't forget that choosing Standard will always put your camera settings back to normal.








Your chosen adjustments will be restored each time you use your cameras.



## Advanced Settings

To access the advanced settings, click the camera icon or pull down the handle on the bottom of the window. A menu will appear listing the available options for your camera. (The list will differ depending on your camera type.)

The following options are available:

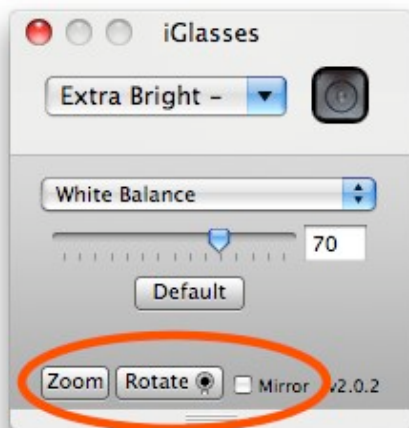
Brightness	Turn the brightness up or down. On some iSights, you can toggle manual/automatic Brightness.
Color Balance	Take control over your colors or choose automatic adjustment. By selecting a location in the color window, you can modify the camera's color range.  Built-in iSight Only
Exposure Lock	Lock the new built-in iSight's auto-exposure.  Built-in iSight Only
Colorize	Like black and white but color tinted.
Contrast	Turn the contrast up or down.
Edge Enhancement	Makes for a sharper picture.  External iSight Only
Manual Focus	Control your external iSight's motorized focus or use auto-focus.  External iSight Only
Gain	Control your external iSight's gain levels.  External iSight Only
Hue	Create fun effects by shifting your colors.
Saturation	Increase or decrease the amount of color in your video.
Sharpness	Makes for a sharper picture.
Shutter	Control your external iSight's shutter speed.  External iSight Only
SW Brightness	Turn the brightness up or down using software-side enhancement.
SW Contrast	Turn the contrast up or down using software-side enhancement.
Temperature	Control your external iSight's color temperature setting.  External iSight Only
Threshold	A fun black and white cartoon mode.
White Balance	When you're looking a little blue, quickly fix your colors.
Zoom and Pan	Use the slider to zoom in and out. Drag the thumbnail image to pan around. Select to "Animate Transitions" to control whether selecting preset zoom settings looking like camera movements or simply jump directly to the new position. You can use your Apple Remote to control the pan and zoom when the Zoom/Pan settings panel is open.

### **Saving Custom Presets:**

After adjusting any combination of the settings described above, you can save those settings as custom presets. To do this, select Save Custom Preset from the main iGlasses menu. You can rename and delete custom presets by selecting Manage Custom Presets.

### **Zoom, Rotate & Mirror:**

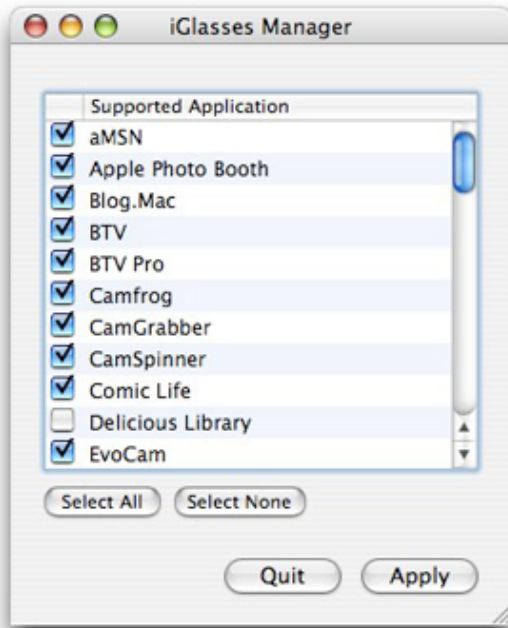
The iGlasses Advanced Settings panel provides zoom, rotate and mirror options.



Rotate can be used to mount an external camera upside down or sideways. Mirror can be used if your camera image is reflected through a mirror. Click Zoom to incrementally zoom in, and to reveal the zoom panel for more options.

### **iGlasses Manager**

iGlasses will appear in dozens of video applications, but sometimes you may want to turn iGlasses off for a particular program. That's where iGlasses Manager comes in. Installed into your Application folder, this tool shows a list of all the iGlasses compatible applications, and lets you uncheck the ones you'd like to disable.



### **iGlasses and AppleScript**

iGlasses Scripting Guide and script examples will be installed into your Applications folder. The Scripting Guide is your reference to writing scripts to control iGlasses.

**Note:** iGlasses Scripting is only available in Cocoa-based applications. Carbon applications such as EvoCam cannot currently allow scripting of iGlasses.

### **Using iGlasses with Web-based chats**

#### **For Safari:**

You'll find the "iGlasses Setting" option in the File menu. This will show the iGlasses window, which should activate when your web-based chat starts showing video.

#### **For FireFox:**

First, make sure you have the latest version of FireFox.

If the iGlasses Window doesn't show up in FireFox:

If the applet doesn't provide a menu for selecting video source, go to the Flash settings (Ctrl-Click on the Flash applet and go to Settings), then access the Video settings tab.

Make a note of what the video device is currently set to.

Select iGlasses from the device list. The iGlasses window should appear.

Now, set the device back to whatever it was on originally.

## Compatible Applications

iGlasses will show up in the following applications:

Acorn  
aMSN  
Apple Photo Booth  
Arkaos VJ  
Blog.Mac  
Bookpedia  
BTV and BTV Pro  
CamCamX  
Camfrog  
CamGrabber  
CamSpinner  
CDPedia  
Cha-Ching  
Comic Life  
CoverScout  
Delicious Library  
DVDpedia  
EvoCam 3.5 Preview 1 or higher  
Web video via FireFox  
Flash Player 9  
FlipBook  
Freak Show  
Funny Photographer  
Gamepedia  
Gawker  
GCam 1.2 or higher  
iCamShare  
I Can Animate  
iChat AV 2.0 or higher  
iMovie 4.0 or higher  
ineen  
iRecord  
Iris  
iSale  
iSpQ 6.3.1 or higher  
iStopMotion  
iVeZeen  
iVisit  
jmeeting  
Journler  
KeyCamX  
Marratech  
Mercury Messenger  
MulleSight  
ohphoneX  
ooVoo  
Periscope  
Pixelmator  
PiXiMation  
QuickTime Broadcaster  
QuickTime Pro Player 7.0 or higher  
SAFlashPlayer

SAM Animation  
SecuritySpy  
SightSpeed  
Skitch  
Skype 2.0 or higher  
SquidCam  
vChat  
Video Viewer  
Web video via Safari  
WebcamTweaker  
WebEx Meeting Manager  
WuffCam  
XMeeting  
Yahoo! Messenger v2.5.3 and v3.0 Beta

### **Support and Troubleshooting:**

For more information and technical support info, please visit our web site:  
<http://www.ecamm.com>

iGlasses Copyright 2008 Ecamm Network, LLC  
To communicate with the Apple Remote control, iGlasses uses the AppleRemote library by Martin Kahr. Copyright 2006–2008 martinkahr.com. All rights reserved.  
iGlasses Uses APELite, Copyright © 2002–2008 Unsanity LLC

Ecamm Network, LLC is not responsible for any loss or damage to you or your property, including your computer, from use of our software. Any use of this software is at your own discretion and risk and you will be solely responsible for any damage to your computer system or loss of data that may result from its use. You agree to defend, indemnify and hold harmless Ecamm Network, LLC and its employees, from and against all claims and expenses, including attorney fees, arising out this software. YOUR USE OF THIS SOFTWARE IS AT YOUR SOLE RISK. THIS SOFTWARE IS PROVIDED ON AN "AS IS" AND "AS AVAILABLE" BASIS.